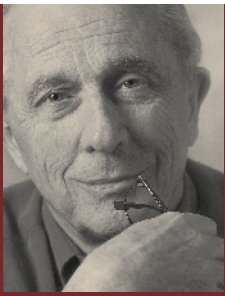


# ABOUT YOUR PET/CT EXAM



You've been scheduled to undergo a PET/CT examination:

Location \_\_\_\_\_

Date/Time \_\_\_\_\_

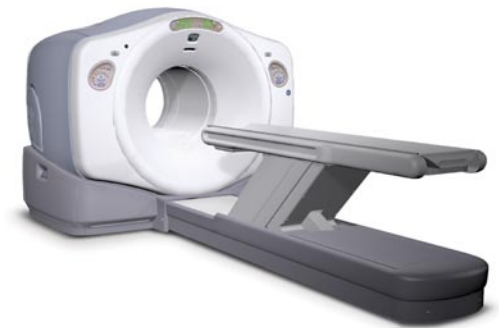
## Please follow these instructions:

- Do not eat or drink anything except water for 4-6 hours before your exam because it could interfere with the results; don't even chew gum. You should arrive fully hydrated.
  - If you take medications, drink only enough plain water to swallow them.
  - If you've been advised not to take your medications on an empty stomach, eat nothing more than a few soda crackers within 4-6 hours of your exam.
  - If you are diabetic, let us know ahead of time so we can work with your physician to determine the safest possible way for you to prepare for your exam.
  - If you feel feverish, please call this to our attention.
  - Do not wear anything metallic (i.e. underwire bras, belts, zippers, buttons)
  - Refrain from strenuous physical exercise 24 hours prior to exam.
- \* In addition, please let us know if you might be pregnant or are currently breast feeding.



PROVIDING  
ANSWERS

# PET/CT



Shared Medical Services

"SMS is a premier supplier of specialized imaging solutions, including Magnetic Resonance Imaging (MRI), Positron Emission Tomography (PET/CT), and Computed Tomography (CT) for 25 years".  
[www.sharedmed.com](http://www.sharedmed.com)



### **What is PET/CT?**

PET/CT combines the functional information from a Positron Emission Tomography (PET) exam with anatomical information from a Computed Tomography (CT) exam in one single exam.

A PET scan detects changes in cellular function — how your cells are utilizing nutrients like sugar and oxygen. Since these functional changes take place before physical changes occur, PET can provide information that enables your physician to make an early diagnosis.

The advantage of CT is its ability to take cross sectional images of your body. These are combined with the information from the PET scan to provide more anatomic details of the metabolic changes in your body.

The PET exam pinpoints metabolic activity in cells and the CT exam provides an anatomical reference. When these two scans are fused together, your physician can view metabolic changes in the proper anatomical context of your body.

### **Why do I need this exam?**

Your PET/CT exam results may have a major impact on your diagnosis, and course of treatment selected by your physician.

A PET/CT study not only helps your physician diagnose a problem, it also helps your physician predict the likely outcome of various therapeutic alternatives, pinpoint the best approach to treatment, and monitor your progress. If you are not responding as well as expected, you may be switched to an alternative therapy.

Ask your physician what he or she hopes to learn from your PET/CT exam.

### **What should I expect when I arrive?**

When you arrive, we will take a review of your history and any past exams.

For the PET portion of the exam, you will receive an injection of radioactive material similar to that which is used for bone scans and other nuclear medicine exams. This is a radioactive tracer that must pass multiple quality control measures before it is used for any patient injection. PET radiopharmaceuticals lose their radioactivity very quickly (two hours) and only very small amounts are injected. In all cases, the majority of radioactivity will be eliminated from the body approximately 6 hours after injection.

For most studies, you will have to wait for the radiopharmaceutical to distribute itself — typically 30 minutes to an hour. During this time you will be asked to relax.

During the exam, you will lie very still on a comfortable table that will move slowly through the scanner as it acquires the information needed to generate diagnostic images.

### **How long will all this take?**

The PET/CT scan should last between 20 and 45 minutes. The exam procedure can vary depending on what we are looking for and what we discover along the way. Plan to spend two to three hours with us.

### **What happens after the exam?**

You may return to designated area as soon as the exam is complete. Unless you've received special instructions, you will be able to eat and drink immediately — drinking lots of fluids soon after the exam will help remove any of the radiopharmaceutical that may still be in your system.

In the meantime, we'll begin preparing the results for review by our diagnosticians, and then by your physician, who will tell you what we've learned.

### **Safety of PET/CT exams**

Be assured that PET/CT exams are a safe and effective diagnostic procedure. The radiopharmaceuticals used in PET doesn't remain in your system long, so there's no reason to avoid interacting with other people once you've left. To be extra safe, wait for a few hours before getting too close to an infant or anyone who's pregnant.

# *Questions & Answers*