



# GREATER REGIONAL HEALTH

Greater Regional Health is a prominent Critical Access Hospital and healthcare provider based in Creston, IA, offering over 50 service lines, including emergency, surgical, and specialty care. Recognized as a Top Workplace from 2018 to 2025, Greater Regional Health serves Southwest Iowa with comprehensive health services, acting as a regional medical hub while reflecting strong organizational culture and patient-centered values.

The 25-bed, critical access, level IV trauma facility includes a 2-bed ICU, Obstetrics, Acute Care, and Swing Bed/Skilled Care units. The Surgery Center consists of 3 OR suites and 2 procedure rooms with strategic plans to implement the da Vinci Robotics system in 2026. The Birthing Center contains 4 LDR suites plus 2 other patient rooms for C-sections and outpatient monitoring. The Cancer Center consists of 8 infusion suites and a state-of-the-art linear accelerator for Radiation Therapy, with plans to expand into our rural clinics with the recruitment of another oncology Nurse Practitioner. Greater Regional Health's Clinics include Primary Care Clinics, Specialty Clinics, and Outreach Clinics.

# LEADERSHIP AT GREATER REGIONAL HEALTH

Greater Regional Health offers progressive leadership, a positive work/life balance, great benefits, and a work environment second to none.



**Monte Neitzel, CEO**, has been at Greater Regional for almost 23 years. He is known for his progressive style and passion for growth. At the beginning of his tenure, GRH had Inpatient Services, ER & General Surgery, as well as a few visiting specialists. GRH has since expanded to include all the services mentioned on the following page, as well as Primary Care Clinics in the surrounding communities of Lenox, Mt Ayr, Corning, and Greenfield. Practitioners providing care in all of these service lines are employed by GRH thanks to Monte's vision.

**Carol Eckels, COO**, has been with Greater Regional for 11 years. She started in Human Resources, quickly advanced to Chief Clinic Officer, and was most recently promoted to COO. With her optimistic attitude, common-sense style, and ability to connect with others, she has a firm grasp on Greater Regional operations. She is available to assist as needed, but encourages providers to take the lead in creating their own practice. Her open-door policy has allowed her to establish strong relationships with all GRH staff from the top down.



**Dr. Epp, Chief of Staff**, has been with Greater Regional for over 21 years. Dr. Epp's responsibilities with GRH are multifaceted, including working as the Medical Director of ER, working as a Hospitalist, helping develop, and now having oversight of the Urgent Care clinics and Occupational Health clinics. Dr. Epp sits on advisory boards for local EMS and Fire Departments as well as Southwestern Community College's EMS program. Dr. Epp's versatility, expertise, and skillset has shaped Greater Regional and has been vital to the on going growth in various departments.



**Family Medicine Clinic** consists of 6 Family Med Physicians, 2 Family Med/OB Physicians, 8 Family Med APPs, and 1 Pediatric APP. The team is led by Family Med Champion, **Karen Krogstad, MD**, who also serves as the Primary Care/Medical Specialists and OB/Neonates/Peds Medical Director.



**Internal Medicine Clinic** consists of 4 Internal Med Physicians and 3 APPs. The team is led by Internal Med Champion, **Steve Reeves, MD**, who also serves as Care Coordination and Cardiac Rehab Medical Director at GRH. Dr. Reeves was named Preceptor of the Year by Des Moines University PA students in 2024.



## GREATER REGIONAL SERVICES

- Allergy
- Athletic Training
- Audiology
- Cancer/Oncology
- Cardiology
- Cardiopulmonary Rehab
- Dermatology
- Diabetes Services
- Emergency Services
- EMG Testing
- ENT
- Family Medicine
- General Surgery
- Gynecology
- ICU
- Infusions
- Inpatient Care
- Internal Medicine
- Lab
- Nephrology
- Neurology
- Nutrition
- Obstetrics
- Occupational Health
- Occupational Therapy
- Oncology Rehabilitation
- Orthopedics
- Pain Management
- Pediatrics
- Pelvic Floor Therapy
- Physical Therapy
- Podiatry
- Psychiatry
- Pulmonology
- Radiology
- Rehabilitation Services
- Respiratory Therapy
- Rural Primary Care Clinics
- Same-Day Sick
- Skilled Care
- Sleep Medicine
- Speech Therapy
- Surgery Center
- Union County Public Health
- Urgent Care
- Urology
- Vascular Care
- Weight Management
- Women's Health Services
- Wound Care

### Hospital Statistics:

Average length of stay - **2.94 Days**

Average daily inpatient census - **11**

# of inpatient admissions per year - **950**

# of outpatient visits per year - **148,800**

# of ER visits per year - **7,320**

# of IP surgeries per year - **185**

# of OP surgeries per year - **2,750**

# of births - **165**

EMR Software - **Epic**

**24/7** hospitalist program

**24/7** CRNA & surgical support

Serves **8 counties** in Southwest Iowa and beyond

**580 employees**, including 74 employed providers & an additional 30 affiliates



## EMPLOYEE BENEFITS

At Greater Regional Health, we pride ourselves on delivering a cost-effective, comprehensive benefits package including:

- Medical
- Dental
- Vision
- Disability
- Life Insurance
- PTO
- CME
- Reimbursement for medical license, Iowa CSA, DEA, and 1 board affiliation
- IPERS (Iowa Public Employees' Retirement System)
- Student loan assistance
- Sign-on bonus
- Residency stipend for early commitment

## OUR GUIDING PRINCIPLES



### Mission

*Greater Regional Health is committed to providing the highest quality health care and service.*



### Vision

*Greater Regional Health will be the healthcare provider and employer of choice.*



### Values

*Compassion, Ownership, Respect, Integrity.*

## OUR LOCATIONS

Greater Regional Health has four rural clinics that extend the reach of our main hospital, providing access to quality care closer to home for the communities we serve.



### **CORNING MEDICAL CLINIC**

700 Davis Ave. Corning, IA 50841

### **LENOX MEDICAL CLINIC**

100 S. Main Street Lenox, IA 50851



### **MT. AYR COMMUNITY HEALTH CLINIC**

120 S Taylor Street Mt. Ayr, IA 50854

### **GREENFIELD MEDICAL CLINIC**

288 Public Square Greenfield, IA 50849



# GET TO KNOW CRESTON



Pictured: Creston's Restored Depot

**Creston, Iowa**, is a rural hub city of approximately 7,500 residents in Union County (southwest Iowa) known for its relaxed atmosphere, rich railroad history, and as the home of Southwestern Community College. Situated at the intersection of Highways 34 and 25, the town serves as a regional center for healthcare, education, and industry. Creston is the county seat of Union County, Iowa, and was originally settled in 1868 as a survey

camp for the workers with the Burlington and Missouri Railroad. The campsite was on the crest of the railroad line between the Missouri and Mississippi rivers, hence the name "Creston." The area was developed largely for agriculture, with related industries accompanying it. Creston is known for its Hot Air Balloon Days Celebration in September, Merry Marketplace festivities shortly after Thanksgiving, Farmer's Market on Mondays in the summer, and hosting its many parades throughout the year, including 4<sup>th</sup> of July, Balloon Days, Homecoming, and the Lighted Christmas Parades.

## Location and Geography

Located in the rolling hills of southwest Iowa, it is the largest city in the region south of I-80 and west of I-35. McKinley Lake lies within a large, multi-purpose municipal park within the city limits, and four additional recreational lakes are located within seven miles of Creston: Green Valley State Park, Summit Lake, Twelve Mile Lake, and Three Mile Recreation Area.

## Economy and Industry

Key sectors include agriculture, manufacturing, and retail.

## Education

Creston is the home to Southwestern Community College and a satellite campus for Buena Vista University. Greater Regional Health partners with SWCC to provide enhanced learning and a clinical site for their nursing program.



Pictured: Southwestern Community College

## Transportation

Features an Amtrak station with daily stops. The nearest major airports are in Des Moines (70 miles), Omaha (100 miles), and Kansas City (150 miles).

## Grocery

Fareway, HyVee, and Walmart.

## Dining

A & G Restaurant and Lounge, Adam's Street Espresso, Big Acai, Brick & Bell Café, Casa De Oro, Chuong Garden, Creston Family Restaurant, Don Julio Cantina & Restaurant, Mario's Bar & Grill, Pizza Ranch, Spencer's Chophouse, The Old-Fashioned Bar & Grill, Una Mas Cantina & Grill, Willy's Bar & Grill.



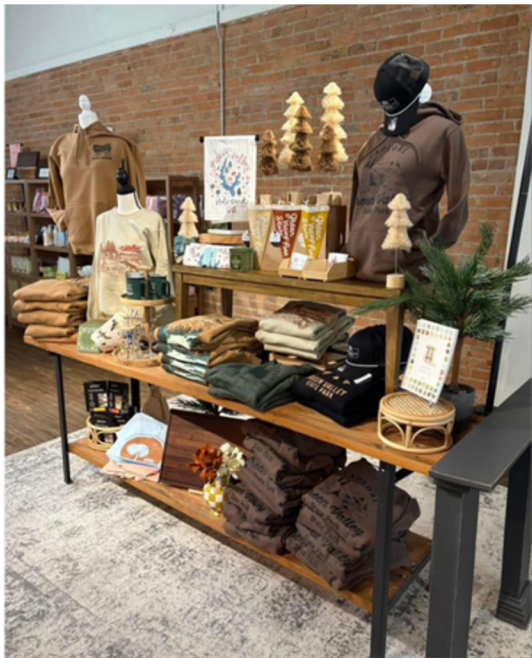
Pictured: Mario's Bar & Grill

## Fast Food

Beggin' for an Eggin', Casey's, Domino's, Hardee's, McDonald's, Scooter's Coffee, Subway, Taco John's.

## Retail

Akin Building Center, BaLu & Co Florist, Bomgaars, Coen's Furniture, Crystals and Wood, Dirt & Gloss Clothing, Dollar General, Dollar Tree, Family Shoe Store, Farmhouse Flavor, Greens N' Things, Hazel Marie's Boutique, Kelly's Flowers, Maurices, Napa Auto Parts, O'Reilly Auto Parts, Rerun Creston, The Latest Edition Bookstore, Three Little Birds Marketplace, Tractor Supply, True Value Hardware, Walmart, Wishing Well, Wrenley Rae's Boutique.



Pictured: Three Little Birds Marketplace

## Housing

GRH apartment may be used by residents depending on availability.