

# GRH

Greater Regional Health



## A YEAR IN REVIEW

GREAT PEOPLE. GREATER CARE.

# 2022

[www.greaterregional.org](http://www.greaterregional.org)  
**641-782-7091**

1700 W. Townline Street  
Creston, Iowa 50801

Greater  
Regional  
HEALTH





# TOP 20

## CRITICAL ACCESS HOSPITAL



Accepting the Top 20 Award: Dr. Matthew Epp, Carol Eckels, Amy Rieck, and Monte Neitzel



Greater Regional Health was recognized as a Top 20 Critical Access Hospital in America in 2022. Compiled by The Chartis Center for Rural Health, this annual recognition program honors outstanding performance among the nation's rural hospitals.

Greater Regional Health has achieved the honor of Top 100 Critical Access Hospital 8 times, while it is the second time in the last 4 years to achieve Top 20.

This honor shows a commitment to not only being one of the best rural hospitals in Iowa, but America. I feel that our patients and families deserve quality care and service. Greater Regional strives to meet that commitment and privilege.

I am thrilled to recognize the ongoing exceptional performance of our staff. This amazing accomplishment would not be possible without the effort they put forth each and every day."

Monte Neitzel, Chief Executive Officer



## WHO WE ARE

Greater Regional Health is a healthcare system located in Creston, Iowa. It is made up of multiple clinics and services, as well as over 550 employees, to best serve our patients of Southwest Iowa.

GRH is an affiliate partner with UnityPoint Health - Des Moines through both a formal management agreement and a Critical Access Hospital network agreement. This relationship enables GRH to retain its governance structure while taking advantage of greater system-wide resources, clinical platforms, best practices and many other advantages which benefit the people in our community. GRH remains locally governed by a Board of Trustees and key administration positions to oversee the day-to-day operations of the hospital and its employees.

GRH is a 25 bed critical access hospital that offers a range of care including Intensive Care (ICU), Acute Care and Swing Bed/Skilled Care. We also have a state-of-the-art Birthing Center, Cancer & Infusion Center, Rehabilitation Center and Sleep Center.

Three rural health clinics are conveniently located in Lenox, Mt. Ayr and Corning. These clinics offer primary care close to home and work closely with the specialists located on our main Creston campus when needed. Future plans are in place to open an additional primary care clinic in Greenfield in 2023!

Union County Public Health, the Medical Spa, and other services are provided at Highway Medical, located on Highway 34 in Creston, while patients can obtain medical records and other information from our Health Information Center. Crest Ridge Estates, designed for the active senior citizen, is a secure, private apartment complex located next door to the GRH main campus.

Learn more about the care and services provided at Greater Regional Health at [www.greaterregional.org](http://www.greaterregional.org)!

## LOCATIONS

**Greater Regional Health**.....(641) 782-7091  
1700 W. Townline Street, Creston, Iowa 50801

**Highway Medical**.....(641) 782-3545  
803 Wyoming Avenue, Creston, Iowa 50801

**Health Information Center**.....(641) 782-3520  
1715 West Prairie Street, Creston, Iowa 50801

**Corning Medical Clinic**.....(641) 322-4431  
700 Davis Avenue, Corning, Iowa 50841

**Lenox Medical Clinic**.....(641) 333-4545  
100 S. Main Street, Lenox, Iowa 50851

**Mt. Ayr Community Health Clinic**.....(641) 464-8971  
120 S. Taylor Street, Mt. Ayr, Iowa 50854

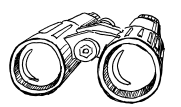
**Greenfield Medical Clinic**.....COMING SOON!  
288 Public Square, Greenfield, Iowa 50849

**Crest Ridge Estates**.....(641) 782-3553  
1715 West Prairie Street, Creston, Iowa 50801



### MISSION

Greater Regional Health is committed to providing the highest quality health care and service.



### VISION

Greater Regional Health will be the healthcare provider and employer of choice.



### VALUES

Compassion  
Ownership  
Respect  
Integrity



### PILLARS OF SUCCESS

People  
Service  
Quality  
Finance  
Growth  
Community



BOARD OF TRUSTEES



**Dave Driskell** Chairperson   **Jack Davis** Vice Chair   **Tom Dunphy** Treasurer   **Sherry McKie** Secretary   **Julie Lanning** Board Member   **Ken Stultz** Board Member   **Tom Lesan** Board Member

EXECUTIVE MEDICAL STAFF



**Joshua Holiday, MD** Chief of Staff   **Mark Preston, MD** Vice Chief of Staff   **Tessa Sandel, ARNP, FNP-BC** Associate   **Matthew Epp, MD** Secretary

ADMINISTRATIVE STAFF



**Monte Neitzel** Chief Executive Officer   **Kimberly Wheeler** Chief Quality Officer   **Matt McCutchan** Chief Financial Officer   **Amanda Mohr** Chief Nursing Officer   **Amy Rieck** Chief Human Resources Officer   **Carol Eckels** Chief Clinic Officer



**TOP  
WORK  
PLACES**  
2018-2022

OUR PEOPLE MAKE THE DIFFERENCE  
Greater Regional Health is always looking for talented individuals to join our amazing staff. For a complete list of current job openings, visit [www.greaterregional.org/careers](http://www.greaterregional.org/careers).

PROVIDERS

- ATHLETIC TRAINING**  
Jon Hochstetler, DAT, LAT, ATC  
Kelsi Huseman, MA, LAT, ATC, EMT  
Kaci Kious, MS, LAT, ATC  
Renee Williams, MAT, LAT, ATC

**AUDIOLOGY**  
Ryan Denny, Au. D., CCC-A

**CANCER CARE**  
Philip Colletier, MD  
Jessica Ellensohn, DNP  
Adam Gliniewicz, MD  
Bradley Hiatt, DO  
John Martens, MD  
Christian Schultheis, MD  
Kayla Snyder, PA-C  
George Voynov, MD  
Corey Yost, PA-C

**CARDIOPULMONARY REHAB**  
Cali Purdum, RN, BSN

**DERMATOLOGY**  
Mallory Kirscher, ARNP

**ENT**  
Arun Gupta, DO  
Kevin Prater, MPAS, PA-C

**FAMILY MEDICINE**  
Jim Gerdes, DO  
Kristen Krakovec, MD  
Karen Krogstad, MD  
Gina Perri, MD (Mt. Ayr)  
Abbey Clarkson, ARNP (Mt. Ayr)  
Chimene Cobb, ARNP (Lenox)  
Raydeen Derscheid, ARNP (Mt. Ayr)  
Liz Hensley, ARNP  
Madison McBride, ARNP (Corning)  
Carly Parker, ARNP  
Darcy Rubenking, PA-C (Lenox)  
Allison Wetzal, PA-C (Corning)

**GENERAL SURGERY**  
Amy Hynek McFarland, DO, FACOS

**INTERNAL MEDICINE**  
Matthew Checketts, DO  
Steven Reeves, MD, FACP  
Adrianna Shuey, DO, MBA  
Sheena Cortner, PA-C  
Kendall Lange, ARNP  
Everett Roberts, ARNP

**MIDWIFE SERVICES**  
Heather Foresman, CNM, WHNP, APRN

**NEUROLOGY**  
Julia Zhu, MD

**OB/GYN**  
Charles Cunningham, MD, FACOG

- OCCUPATIONAL THERAPY**  
Andrea Skellenger, OTD, OTR/L, CLT, CEAS

**ORTHOPEDICS**  
William Ralston, DO  
Timothy Rankin, MD  
Marc Zoutte, PA-C

**PAIN MANAGEMENT**  
Greg Anderson, MSN, CRNA  
Megan Ng, ARNP

**PEDIATRICS**  
Cheri Standing, MD  
Brooke Martin, CPNP-PC

**PHYSICAL THERAPY**  
Jill Hoakison, PT, DPT  
Travis Eggman, PT, DPT  
Teena Jones, PT, DPT, TPS  
Amy Longstaff, PT, DPT, CSMT  
Kristin Magnus, PT, DPT  
Stormy Wilson, PT, DPT, VRT

**PODIATRY**  
Eric Larsen, DPM, FACPM  
Laura Hagen, ARNP

**PSYCHIATRY**  
Mark Preston, MD  
LeeAnn Berg, ARNP

**PULMONOLOGY**  
Annie Nawab, MD, FCCP  
Megan Ng, ARNP

**SAME-DAY SICK**  
Emily Turner, FNP

**SLEEP MEDICINE**  
Annie Nawab, MD, FCCP

**SPEECH THERAPY**  
Travis Miller, MS, CCC-SLP  
Emily Riley, MA., CCC-SLP

**URGENT CARE**  
Bailey Baker, ARNP  
Kristen Collier, ARNP  
Jessica Crandall, ARNP, FNP-BC  
Amanda Dahlstrom, ARNP  
Emily James, ARNP  
Chanda Moreland, ARNP  
Tessa Sandel, ARNP, FNP-BC  
Lauren Craver, ARNP

**UROLOGY**  
Jonathan Fialkov, MD  
Crystal Johnson, MSN, ARNP

**WEIGHT MANAGEMENT**  
Carly Parker, ARNP

**WOUND CARE & HYPERBARIC OXYGEN THERAPY**  
Gina Latham, MSN, ARNP, FNP-C, CWCN-AP

Welcome  
**NEW  
PROVIDERS**

- Bailey Baker**  
ARNP  
Urgent Care

**Sheena Cortner**  
PA-C  
Adult Medicine

**Lauren Craver**  
ARNP  
Urgent Care

**Amanda Dahlstrom**  
ARNP  
Urgent Care

**Elizabeth Hensley**  
ARNP  
Family Medicine

**Emily James**  
ARNP  
Urgent Care

**Kristen Krakovec**  
MD  
Family Medicine

**Madison McBride**  
ARNP  
Family Medicine

**Gina Perri**  
MD  
Family Medicine

**Julia Zhu**  
MD  
Neurology

**Marc Zoutte**  
PA-C  
Orthopedics



# REINVESTING *in the* COMMUNITY

Greater Regional Health prioritizes healthy initiatives not only in our hospital and clinics but also within the communities we serve. A healthy community is one in which all residents have access to a quality education, safe and healthy homes, adequate employment, transportation, physical activity, and nutrition, in addition to quality health care. Greater Regional Health chooses to reinvest in projects to promote an overall healthy community.

Greater Regional Health is a county hospital governed by Iowa Code Chapter 347, its board bylaws, and hospital policies and procedures. Initiatives are supported if it is financially suitable to do so each fiscal year. It has not raised taxes in 20 years and will not raise taxes to support community reinvestment projects.

Greater Regional Health collects feedback from staff on which potential reinvestment initiatives they feel would most benefit the community. The growth achieved over the last 5 years has made it possible for community reinvestment initiatives to be supported by the organization.



Greater Connections Childhood Development Center

In order for this project to start, Creston Community School District donated land to Greater Regional Health who is building the facility and donating it back to I Think I Can Daycare 501c3. The over 14,500 square foot facility will serve over 175 children and plans to open in 2023.

“When we surveyed our employees about what aspect of community reinvestment would be most meaningful for them, the resounding response was for increased access to childcare. This project represents the culmination of the input of our employees and the support of our Board of Trustees to expand child care services for our community,” stated Monte Neitzel, Greater Regional Health CEO.



Greater 8 Mile & 5K Run

Greater Regional Health is proud to be the title sponsor of Creston's Greater 8 Mile and 5K. The run is a fundraiser for the Union County trail system.



Southern Prairie Family Fitness Center

Several healthy collaborations began at Southern Prairie Family Fitness Center such as the creation of sensory motor pathways for the before and after school youth. Sensory pathways are ways for youth to develop motor skills like balance, spatial awareness, hand-eye coordination and breathing techniques. A partnership with Greater Regional Rehabilitation Services offers Parkinson's and Limited Mobility Classes for community members diagnosed with Parkinson's disease. The class is designed to assist patients in maintaining strength, balance, and mobility so they can stay involved in activities that are meaningful to them, as safely and independently as possible.

Farmer's Market

The Greater Regional Healthcare Foundation has sponsored the Creston Farmers' Market since 2019. The market is held from June through September every Monday at McKinley Park. The Foundation supports access to local vegetable growers, meat producers and other vendors in the community.



Kid's Day at the Union County Fair

Greater Regional Health was the proud sponsor of the 2022 Kid's Day at the Union County Fair. It was a fun-filled day at the fair including activities, events and contests. This community collaboration was made possible because of the amazing support of local businesses and organizations who provided supplies and volunteered time.

SWCC EMS Program Ambulance Donation

Greater Regional Health donated an Ambulance to the Southwestern Community College EMS Program. The EMS program uses the ambulance for student training by providing a real world environment.





# YOU'RE IN *Great* HANDS!

The Greater Regional Surgery Center is continuously growing while maintaining a high standard of care. The center sees a wide variety of surgeries from general procedures to more complex specialty procedures. Greater Regional Health is fortunate to be able to offer many specialty surgeries locally. Our specialties include OB/GYN, Urology, Podiatry, Orthopedics, ENT, and visiting eye surgeons.

2022 was a busy year, averaging 249 cases per month. Ten years ago, the surgery center averaged 133 cases per month. This growth directly relates to our exceptional staff and positive patient outcomes.

Most of our surgeons work and live locally– that is a meaningful difference. They are vested in our hospital and our community. Our current staff has over 350 years of combined experience in their field providing knowledgeable and compassionate care. All surgery staff adhere to a variety of medical standards and go through extensive training, plus a 6-month perioperative 101 course.

Our patients consistently give positive feedback and recommendations. In the months of May and September, we received a 100% net promoter score from our patient surveys. That means, of the patients that responded to a survey, all of them either gave us a 9 or 10 on likelihood to recommend our facility to others.

2022 marked 10 years since Greater Regional Health was hit by a tornado. During those renovations, a time capsule was placed behind the marble 2012 plaque on the wall as you enter the North Entrance. The capsule included a list of current staff and services offered at that time. Since then, the surgery center has grown in many ways.

When we moved into the new surgery center in spring 2012, we had 2 full-time general surgeons and a handful of visiting surgeons. Now, our full-time staff includes general surgery, orthopedics, OB/GYN, podiatry, urology, and



**Jackie Whitson,**  
*Director of Surgical Services*



**ENT**  
**Arun Gupta, DO**

**GENERAL SURGERY**  
**Amy Hynek McFarland,**  
DO, FACOS

**OB/GYN**  
**Charles Cunningham,**  
MD, FACOG

**ORTHOPEDICS**  
**William Ralston, DO**  
**Timothy Rankin, MD**

**PAIN MANAGEMENT**  
**Greg Anderson, MSN, CRNA**

**PODIATRY**  
**Eric Larsen, DPM, FACPM**

**UROLOGY**  
**Jonathan Fialkov, MD**

pain management, as well as visiting ophthalmology and weekly ENT surgeries. Anesthesia providers and nursing staff have both more than doubled.

The tornado renovations also gave way to an expanded physical space. The surgery center grew from 2 operating rooms to 5 and went from a 1 bed post anesthesia care unit to a 4 bed PACU. What was once a 6 bed pre/post operation area with curtain dividers, went to 12 private pre/post-operative rooms.

Surgical advancements and improved equipment have also led to growth at Greater Regional Health. The orthopedics service line has greatly expanded to include total hip, knee, and shoulder replacements. The Mako Robot is used for 99% of our total hip and knee surgeries, allowing greater precision, shorter recovery, and better results with robotic-arm assisted joint replacement.

Urology, podiatry, and pain management surgical services have also expanded. We have added a full line of gynecology surgeries, including laparoscopic hysterectomies. Laparoscopic nephrectomies and prostatectomies are also up and running in 2022. 4K imaging for our laparoscopic, arthroscopic, urology, and ENT scope procedures is available as well as laser for the treatment of urology conditions.



Our equipment is updated on an ongoing basis, as we strive to maintain state of the art equipment for our providers and staff. An updated sterile reprocessing area has helped lead to an extremely low postoperative infection rate.

The growth of the surgery center has been exciting and extremely rewarding. We have an outstanding team in a well-equipped facility. We keep best patient care at the core of our decision making which leads to high patient satisfaction and excellent patient outcomes. Greater Regional Surgery Center is filled with wonderful providers and staff who work together daily toward a common goal. Everyone is committed to providing the highest quality care for our patients.







# HIGH STANDARDS FOR Success

Greater Regional Health has been the recipient of many awards, accreditations and certifications this year. It has also been a pleasure to honor community members and our own staff who consistently strive to uphold the mission of Greater Regional Health.

## Primary Stroke Center Recertification

Greater Regional Health was recertified as a Primary Stroke Center this year by Det Norske Veritas Healthcare (DNV). This certification shows the community we have the resources and commitment to provide excellence in stroke patient care.

"Stroke is the leading cause of disability in America. Achieving DNV-GL Primary Stroke Center certification has given Greater Regional Health a tremendous opportunity to keep pushing ourselves to do better for our patients. With this certification, our community and the communities we serve will have more confidence in the quality and safety of care, treatment and services provided. This certification has allowed us to keep more patients closer to home for their care," said Brittni Schmidt, Stroke Coordinator.

"Applicable staff are educated on the most up to date stroke care and best practice strategies as designated by the American Heart Association and the Brain Attack Coalition. Greater Regional Health has assembled a stroke team that includes a variety of disciplines and created policies and procedures to be 'stroke ready' when the need arises," said Schmidt.



**Brittni Schmidt,**  
Stroke Coordinator

## Certification in Infection Prevention

Greater Regional Health received its Certification in Infection Prevention (CIP) recognizing exceptional processes and approach to mitigating infection risk that exceeds current standards.

"This certification lets our patients know we have the resources and commitment to provide the best possible care for managing infection risk," said Kim Weehler, Chief Quality Officer. "The CIP Certification requirements build upon three important pillars: 1) a proactive rather than reactive approach to safety; 2) the development of a safety culture that is transparent and accountable; 3) engagement of all staff towards a systems-driven approach to safety. Achieving certification validates all the effort we have put into this program and ensures the health and safety of our patients."



**Kim Weehler,**  
Chief Quality Officer

"The DNV CIP program motivates entire hospital systems to identify and mitigate vulnerabilities, rework, and redesign existing systems, more efficiently manage resources, and ensure smarter and safer healthcare," said Kelly Proctor, President, DNV Healthcare USA Inc.

## DID YOU KNOW?

Greater Regional Health is 1 of 3  
Critical Access Hospitals in the U.S.  
Certified in Infection Prevention!

#powerofrural

## Iowa Top Workplaces 2022 Award

Greater Regional Health was awarded a Top Workplaces 2022 honor by Iowa Top Workplaces. The list is based on employee feedback gathered through a third-party survey administered by employee engagement technology partner Energage LLC. The anonymous survey uniquely measures 15 culture drivers that are critical to the success of any organization including alignment, execution, and connection.

"We are proud of our entire staff who create a workplace where we promote constructive feedback, which leads to an environment of collaboration and reflection upon processes for the greater good," stated Amy Rieck, Chief Human Resources Officer at Greater Regional Health. "That is why I am proud to announce this is our 5th year in a row receiving this award. We are excited that our employees choose to stay and work for Greater Regional Health."

"Earning a Top Workplaces award is a badge of honor for companies, especially because it comes authentically from their employees," said Eric Rubino Energage CEO. "That's something to be proud of. In today's market, leaders must ensure they're allowing employees to have a voice and be heard. That's paramount. Top Workplaces do this, and it pays dividends."



## Auxiliary Scholarships

Greater Regional Auxiliary presented five \$1,000 scholarships to individuals pursuing a health related career. Congratulations to Hannah Dryden (Southwestern Community College), Aidan Anderson (Northwestern College), Macy Wiley (Grandview University), Rylie Driskell (University of Northern Iowa), and Kaci Abildtrup (University of Iowa).



## The DAISY Award

The DAISY Award is a program that rewards excellence in nursing. It was created by the DAISY Foundation to recognize the clinical skills and extraordinary compassion and care exhibited by nurses every day. The award is given out two times a year at Greater Regional Health. The spring Daisy Award winner was Loretta Umbenhowe and Amanda Baldwin-Smith was recognized during the fall ceremony. All of the nominees consistently demonstrate our core values of compassion, ownership, respect and integrity.

## Hospital Hero

Heroes are among us. We work with them every day. Each quarter employees nominate their peers for the Hospital Hero Award for going above and beyond in the work place. Congratulations 2022 honorees:



**Mark Williams**  
IT



**Cody Callison**  
Maintenance



**Hailey Endres**  
OB/GYN Clinic RN



**Pantera Stowers**  
HIMS

## Performance Leadership Awards

As part of the National Rural Health Day celebration, Greater Regional Health announced it was recognized with a 2022 Performance Leadership Award for excellence in Quality and Patient Perspectives. Compiled by The Chartis Center for Rural Health, the Performance Leadership Awards honor top performance (75th percentile or above) among rural hospitals in Quality, Outcomes and Patient Perspective.



"Congratulations to our staff for receiving not one, but two Leadership Awards. Our focus on Quality and Patient Experience is what delivers the results to earn two awards in excellence. These awards also complement our achievement as a Top 20 Critical Access Hospital in 2022. With that said, our employees' dedication, resilience and knowledge allow us to deliver the high-quality care our patients of southwest Iowa expect and deserve," stated Monte Neitzel, Chief Executive Officer.





New providers were welcomed and introduced to the community with Open Houses.



A raised garden was added at Crest Ridge Estates for residents to enjoy.



Volunteers celebrated the seasons in numerous parades.



Volunteers handed out Halloween candy at Bright Eyes.



GRH donated supplies to East Union Community School District to build 60 emergency "ALICE" buckets.



Volunteers supported the work and mission of "Meals From the Heartland" by packing meals for the hungry.



Daisy Award nominees were honored for their excellence in nursing during the fall ceremony.



About 180 babies were born at the Birthing Center.



\$30,000 was donated to the City of Lenox and City of Afton for community walking trails.



"Crush Cancer in Every Color" volunteers worked stations at the Color Run.



The pediatric team held a "teddy bear clinic" at the Union County Fair Kid's Day.



Employee recognition celebrations were held throughout the year. A few of the surgery nurses posed during Perioperative Nurse Week.



Dr. Joshua Capson worked with Matura Head Start students to build birdhouses.



Area Business Coffee was hosted by GRH.



The Medical Spa opened and began offering facial and lip fillers and wrinkle injections.



GRH began offering Nerve Pain Therapy.



Employees participated in themed dress-up days during Hospital Week.



Games were played during Hospital Week.



Staff were honored for their years of service.



Retired employees gathered for an annual breakfast and coffee.





# ENHANCING *Your* HEALTH CARE

The Greater Regional Healthcare Foundation was established in 1993 with the mission of providing support to improve and enhance the health and well-being of the communities Greater Regional serves through the purchase of new equipment, items to improve patient experience, educational opportunities and other projects as determined by its board. Generous donations by families and friends through memorials or annual giving and fundraising efforts by local groups have made a significant positive contribution to the experience of local health care and health and wellness opportunities.



2022 was filled with exciting events and contributions. The Foundation was proud to be the sponsor of the Creston Farmers Market for the fourth year. The market is held every Monday from June through September and provides our community with access to fresh local produce and other products. It is located in McKinley Park with plenty of opportunities for children and families to play as well as access to the trail system.

The Stephen and Connie Beasley PANS (Pediatric Autoimmune Neuropsychiatric Disorders) Compassion Fund Endowment was established in 2021 in honor of Dr. Cheryl Standing for the benefit of patients and families navigating treatment and travel for PANS. 2022 marked

the first full year the endowment was in service. The Foundation works closely with the pediatrics department to assist families traveling, sometimes from out of state, with hotel rooms, gas cards and other needs as necessary. World PANS/PANDAS Day is held on October 9th. During October the Foundation and GRH partnered to share additional education about PANS to the public while fundraising to support the endowment.

The first Friday in June, the Foundation hosted its 31st annual golf event at Crestmoor Golf Club in Creston. 49 teams competed and the Hartsock Insurance team won with a score of 27. The event raised over \$40,000 and is the largest fundraising event of the year with funds designated toward the Auxiliary's annual healthcare scholarships and a project selected by the Foundation Board. This year over \$28,000 of funds were designated towards an upgrade to the Perigen Fetal Monitoring System in the Birthing Center. Next year's event is planned for Friday, June 2, 2023!

Fundraising to support the Greater Regional Cancer and Infusion Center occurred throughout 2022. Funds raised have been utilized for many projects in the department such as a blanket warmer, treatment equipment, heated massage chairs, gas cards and educational lunch and learns. Events such as the United We Fight Pink Outs held at area athletic events generated funds utilized to provide upgraded equipment. The Cancer and Infusion Center regularly serves patients driving from as far away as Missouri. The Patches and Pieces Quilt Guild has regularly donated proceeds of their annual quilt raffle towards the purchase of gas cards. These gas cards make a significant difference to patients experiencing hardship as they navigate regular appointments and travel for



chemotherapy or radiation therapy. This year was the inaugural year for the Crush Cancer in Every Color event which included a color run, car show and luminaria ceremony. The events and committee are chaired by community members with an interest in keeping funds supporting patients and cancer treatment local. All donations to the Foundation, including these, are kept local and are specifically utilized by the department specified by donor.

The Foundation appreciates our community support and the generous gifts from our donors and looks forward to continuing to enhance the excellent care provided by Greater Regional Health.



**Jessica Duncan,**  
Foundation Director



## CancerCARE CLOSE TO HOME

The Greater Regional Cancer & Infusion Center has provided over two decades of cancer care for our communities. Services include oncology, hematology, infusions, and radiation therapy.

A partnership with Mercy One Richard Deming Cancer Center and Mission Cancer + Blood allows patients to see the same providers they would see in Des Moines right here in Creston.

Our Medical Oncologists and Hematologists have clinics every Tuesday and Thursday. Radiation therapy, Chemotherapy, Immunotherapy, and Infusions are available Monday through Friday.



We treat every type of cancer at Greater Regional Health. Lung, prostate, and breast cancer patients are common, but we also see colon, endometrial, head/neck, and many other cancers as well.

We work closely with you, your family, and physicians to coordinate evaluations, treatment planning, therapy, follow-up, and counseling. Our staff provides you with a clear understanding of your cancer and the appropriate treatment options available. We take the time to make sure you are thoroughly informed and will answer all your questions.

The Cancer and Infusion Center offers access to state of the art equipment and a team of experienced physicians and staff who are dedicated to excellence in the management of your health. We are excited for the installation of a new Linear Accelerator in 2023. This machine provides our patients with radiation therapy treatments.

The Infusion Center began working with pediatrician, Dr. Cheri Standing, to treat PANS/PANDAS children this year. They continue to offer chemotherapy, immunotherapy and many other infusions and transfusions for these patients.

We also have dieticians who assist patients with nutrition through their cancer journey and a Care Coordinator who can assist patients with financial, social and transportation needs.

Every single staff member in the Cancer & Infusion Center is here because they love what they do every single day. We treat every patient like family.



**Katy Wiley,**  
Director of Cancer Center



# 2022 Services

IN CASE OF EMERGENCY, CALL 911!

**MEDICAL CENTER.....(641) 782-7091**

Birthing Center  
Business Health  
Diabetic Education  
Emergency & Ambulance  
Lab  
Nutrition  
Cancer & Infusion Center  
    · Hematology  
    · Infusions  
    · Oncology  
    · Radiation Therapy  
Radiology  
Rehabilitation Center  
    · Athletic Training  
    · Cardiopulmonary Rehab  
    · Occupational Therapy  
    · Pelvic Floor Therapy  
    · Physical Therapy  
    · Speech Therapy  
Respiratory Therapy  
Surgery Center  
Urgent Care

**PRIMARY CLINIC.....(641) 782-2131**

Dermatology  
Family Medicine  
Family Medicine/OB  
Injections  
PANS  
Pediatrics  
Psychiatry  
Same-Day Sick  
Weight Management

**ADULT MEDICINE CLINIC.....(641) 782-3952**

Internal Medicine  
Neurology

**SPECIALTY CLINIC.....(641) 782-3887**

Audiology  
ENT  
General Surgery  
Midwife Services  
OB/GYN  
Orthopedics  
Pain Management  
    · Nerve Pain Therapy  
Podiatry  
Pulmonology  
Sleep Medicine  
Urology  
Wound Care  
    · Hyperbaric Oxygen Therapy

**HIGHWAY MEDICAL.....(641) 782-3545**

Union County Public Health  
Medical Spa  
Visiting Providers  
    · Allergy  
    · Cardiology  
    · EMG Testing  
    · Nephrology  
    · Palliative Care  
    · Vascular

We are committed to providing the highest quality health care and service to our patients and communities.

Learn more about the services provided at Greater Regional Health at:  
**[www.greaterregional.org](http://www.greaterregional.org)**



1700 W. Townline Street  
Creston, Iowa 50801

